

Household Support Fund

Partner Grants and Commissions

Guidance and Eligibility Information
for Partners

Partner Grants and Commissions:

Funding has been allocated to target support to specific groups, in alignment with HSF guidance. More specifically, these are:

- Households with children,
- Households with pensioners,
- Unpaid carers,
- Care leavers,
- Households with disabled people.

Community partners will be invited to submit applications for grant funding, outlining specific services or projects that will be delivered to directly support these groups. This will ensure support can be targeted to key groups who need support.

Phase 1

There is a total of £75,000 available, split in to £15,000 per target group.

Programme details

We are looking to support local community organisations and services that can provide direct and meaningful support to households struggling with the cost of living. In particular we want our partners to set out what they can do to specifically to support households with children, pensioners, unpaid carers, care leavers or disabled people.

Organisations should be able to demonstrate and set out clearly what support they can provide through either enhancing existing services, increasing their capacity or providing new interventions directly to any of those target groups.

We would expect services or projects to provide two elements:

- practical support such as access to food, household essentials,
- Intervention based activities such as budgeting support or improving access to support services as examples

We also expect successful applications to work with us to provide digital inclusion / learning opportunities through those engaging with services. Sessions would be delivered through a partner with grant recipients proactively working with the council to encourage uptake and access to sessions.

Who can apply?

Charities, Not for Profit organisations, CIOs and community groups that meet our eligibility criteria, and support people within South Ribble.

What type of funding can be applied for?

£15,000 is allocated to each target group and dependant on the applications received, these may be awarded as single grants to one community partner or agency or split across numerous smaller and more focused grants.

Organisations can apply to support more than one target group but for no more than £30,000 in total.

Funding will be awarded to cover the costs of projects / services that can provide practical support for any of the following:

- Households with children,
- Households with pensioners,
- Unpaid carers,
- Care leavers,
- Households with disabled people.

Organisations awarded funding will be able to use 6% of the total grant for administration costs. The remaining 94% must be directly used to deliver their project/service and practical support.

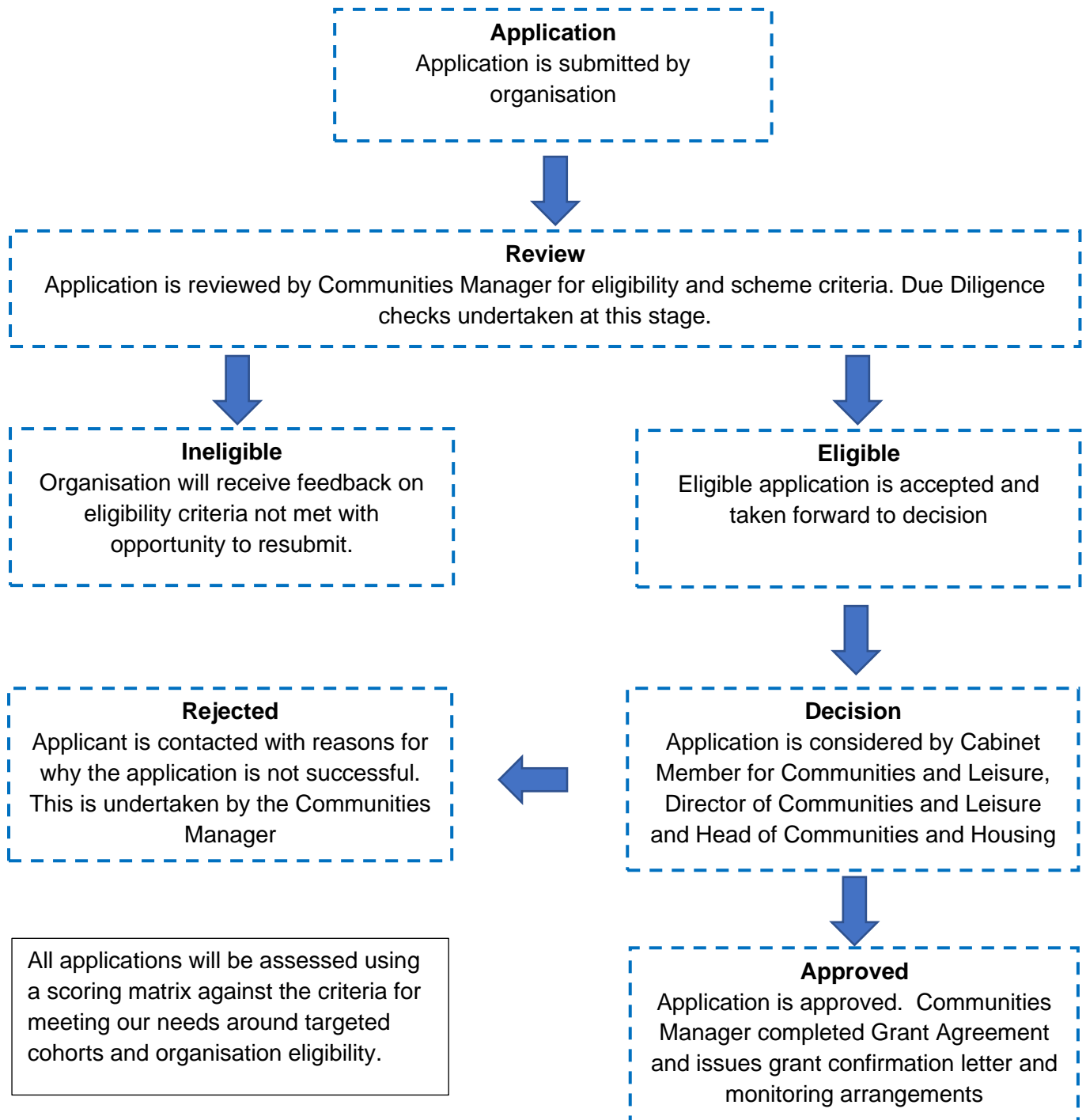
When to apply

Applications for a grant can be made at any time and will be reviewed on a rolling basis up until 1st December 2023. Funding will be provided on a first come, first served basis and when funds are depleted the scheme will close.

All funding must be spent by 31st March 2024. Any monies not spent will need to be returned to the Council

Applications can be made using the Expression of Interest Form

Decision Process



Eligibility criteria for all organisations applying to South Ribble Council

Typically, we award grants to:

- constituted voluntary-led organisations with charitable aims,
- registered charities
- charitable incorporated organisations (CIO)
- social enterprises
- community interest companies (CIC)
- companies limited by guarantee that have charitable aims

Eligibility criteria checks Organisations seeking funding must satisfy the following conditions:

Volunteer-led organisations, registered charities and CIOs must	Social enterprises, Community Interest Companies (CIC) and other companies must:
Have a management committee with a minimum of four unrelated members	Have a management committee with a minimum of three directors, or four directors if two are related
Have a bank or building society account in the name of the organisation/group, with a minimum of two unrelated cheque signatories	Have a bank or building society account in the name of the organisation/company, with a minimum of two unrelated cheque signatories
Have charitable aims	Have clear charitable purposes and a defined social benefit
Provide evidence of good governance practices and sound financial management (including registering with the Charity Commission, CASC or other governing body, depending on the size of the organization)	Have a recognised status (e.g. a company limited by guarantee), and be registered with the necessary relevant body (e.g. Companies House)
Usually, you must register with the Charity Commission if your charity is based in England or Wales and has over £5,000 income per year. We may ask for evidence of this in the form of a letter from the Charity Commission confirming receipt of your application for charitable status.	Have an asset-lock clause in the Company's dissolution.

Expected policies

In managing your organisation, we would expect that the appropriate policies are in place. These should include (if appropriate) but not be restricted to:

- safeguarding policies and procedures for children and vulnerable adults
- public liability insurance (£10 Million)
- employer's liability (£5 Million)
- disclosure and barring service (DBS) checks carried out and in place for all paid and unpaid volunteer staff working with children and vulnerable adults

We are unable to accept application from groups that:

- have not returned monitoring forms for previous (completed) grants
- are subject to an investigation by the Charity Commission, the police or any other organisation in a legal capacity
- fail due diligence or do not comply with Charity Commission guidelines i.e. we would not make grants to organisations that had related bank signatories, several related trustees, income well in excess of the threshold for charitable registration etc.

This Page is Blank